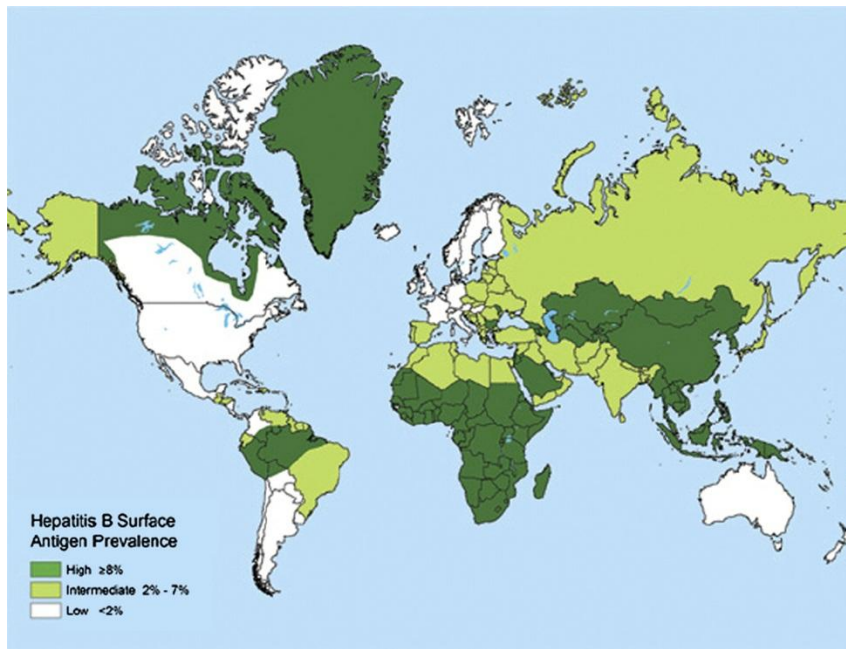
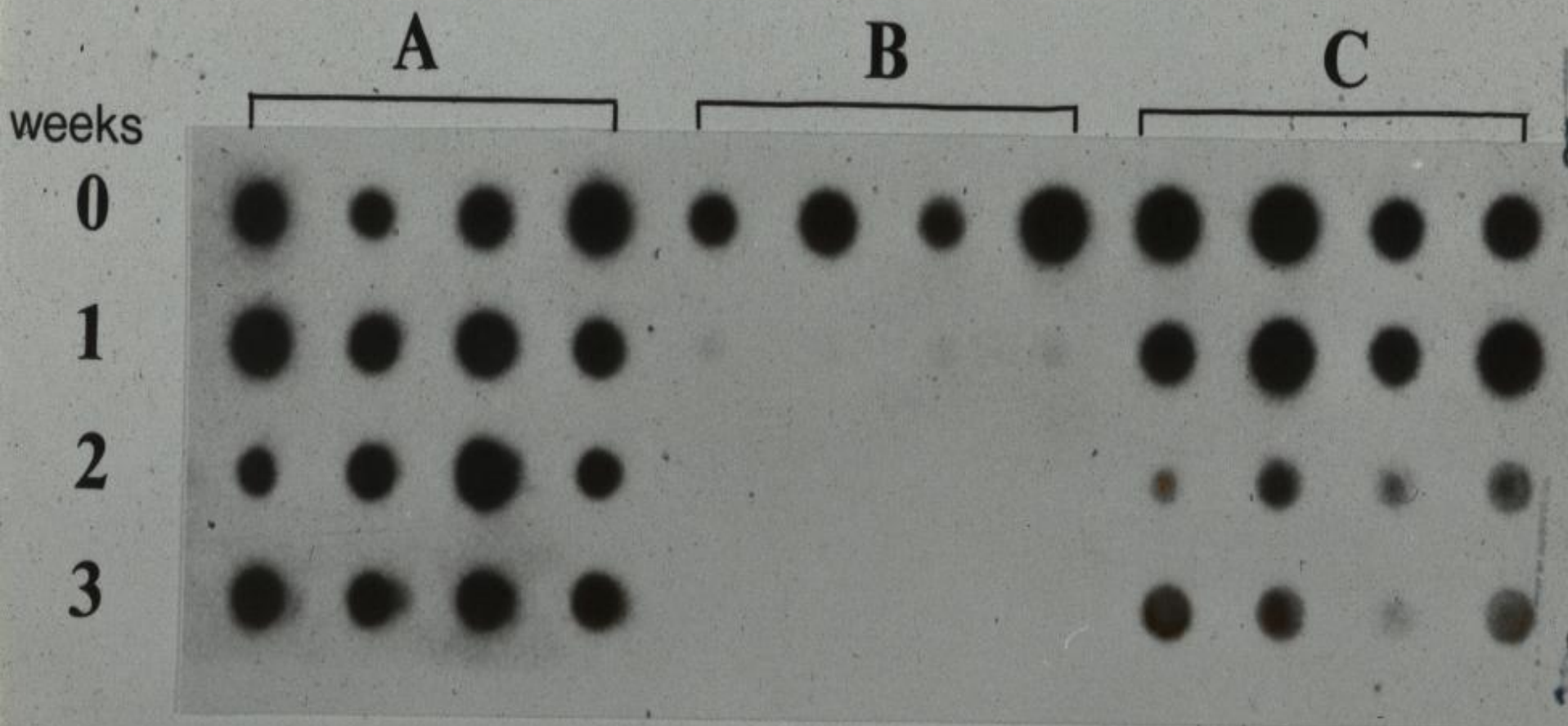


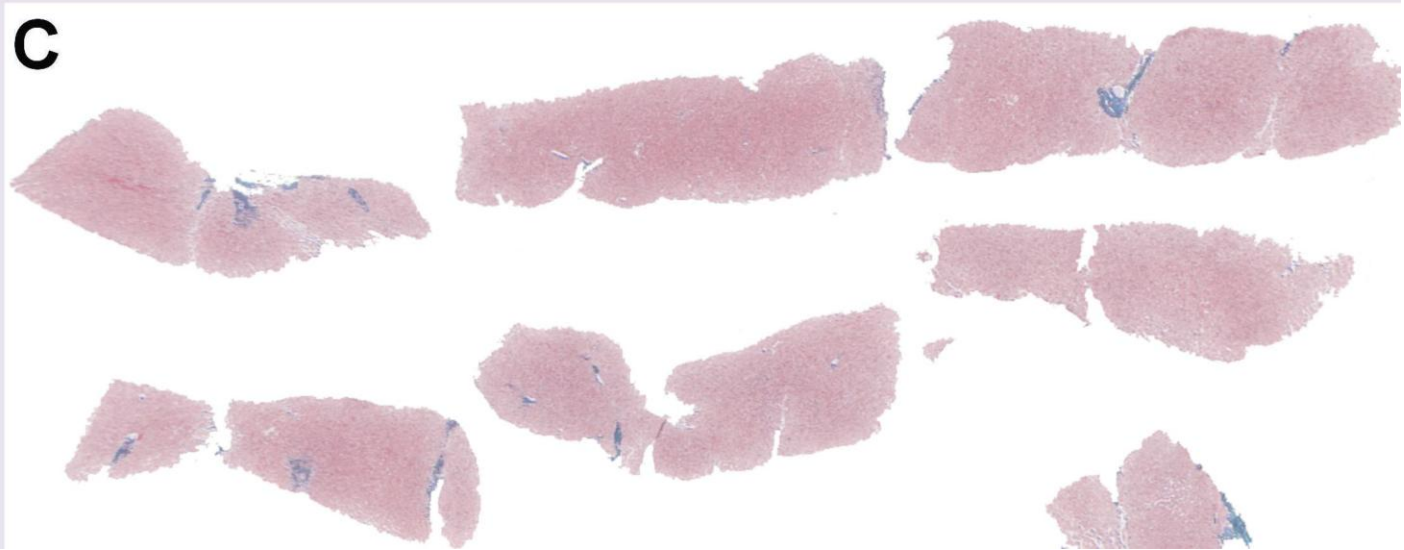
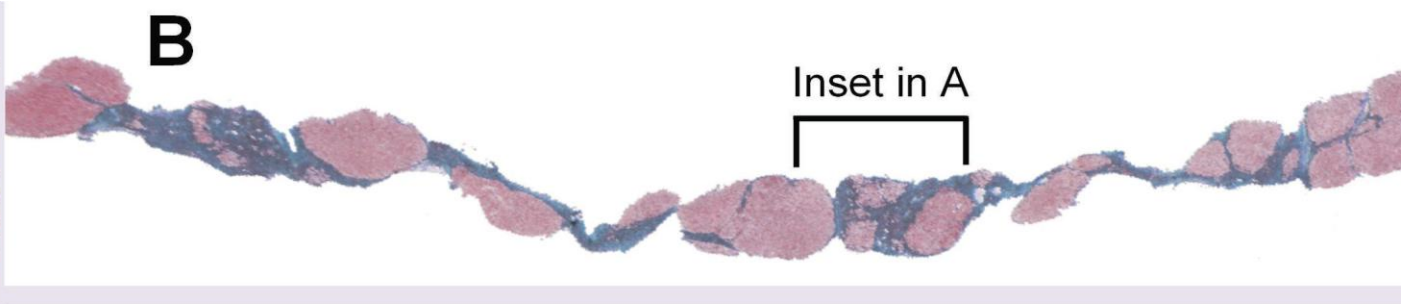
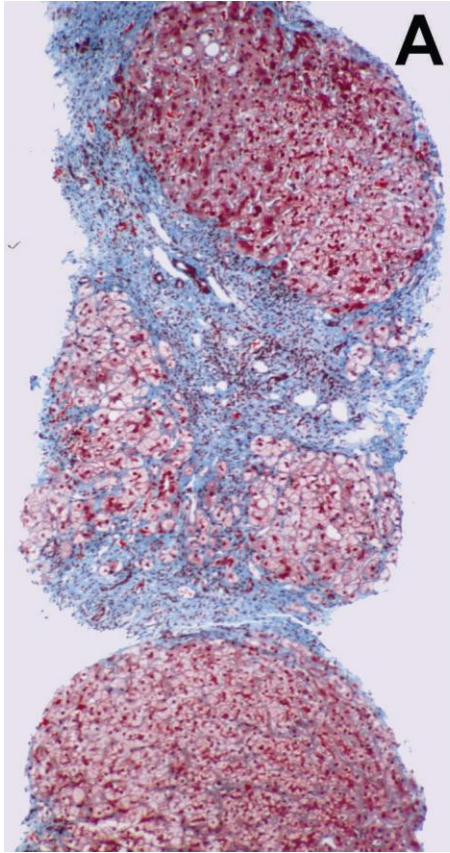
Hepatitis B Virus (HBV)



Te H.S. & Jensen D.M. 2010. Clin Liv Dis. 14:1-21.

- 350 million infected worldwide
- Only 5% of adults become chronically infected
- 90% of infants and 30% of children under the age of 6 become chronically infected
- 80% of chronically infected people likely acquired HBV perinatally or in early childhood
- Many individuals face serious liver health challenges in young adulthood

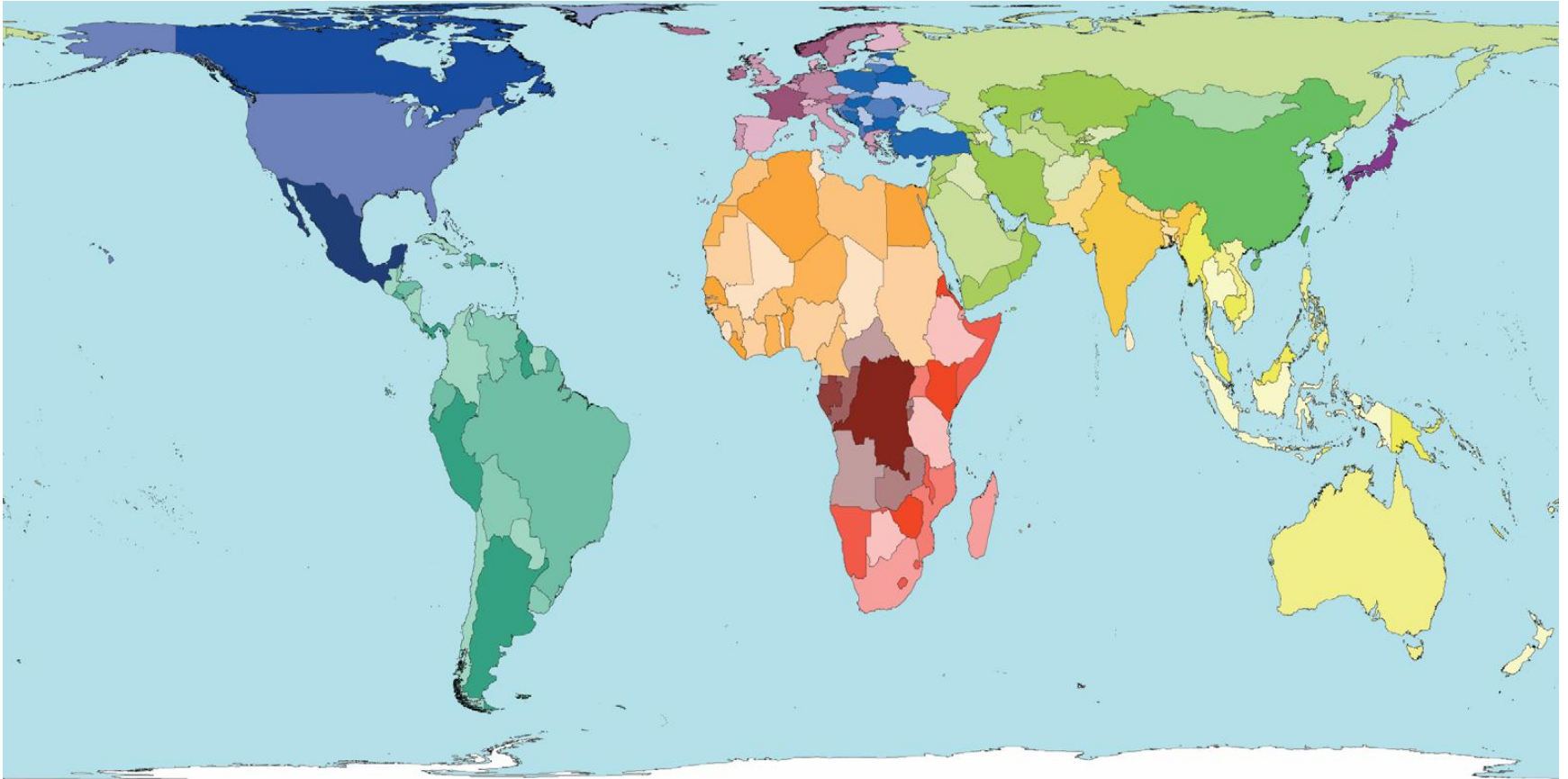




Cost of Therapy – 1 month

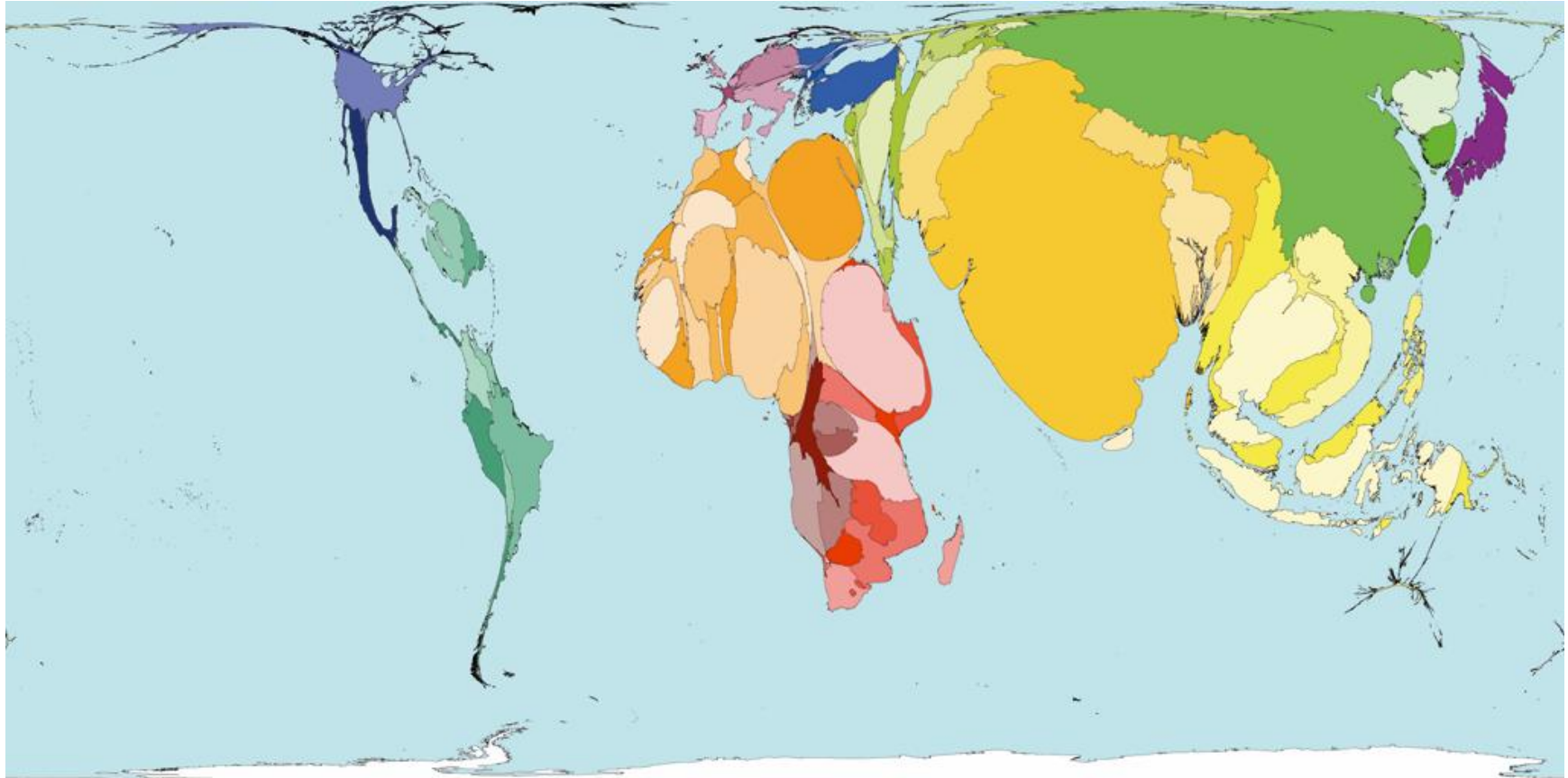
- | | |
|----------------------|-----------|
| 1. Lamivudine 100 mg | \$ 141.00 |
| 2. Entecavir 0.5 mg | \$ 660.00 |
| 3. Tenofovir 300 mg | \$ 560.00 |

Land Area



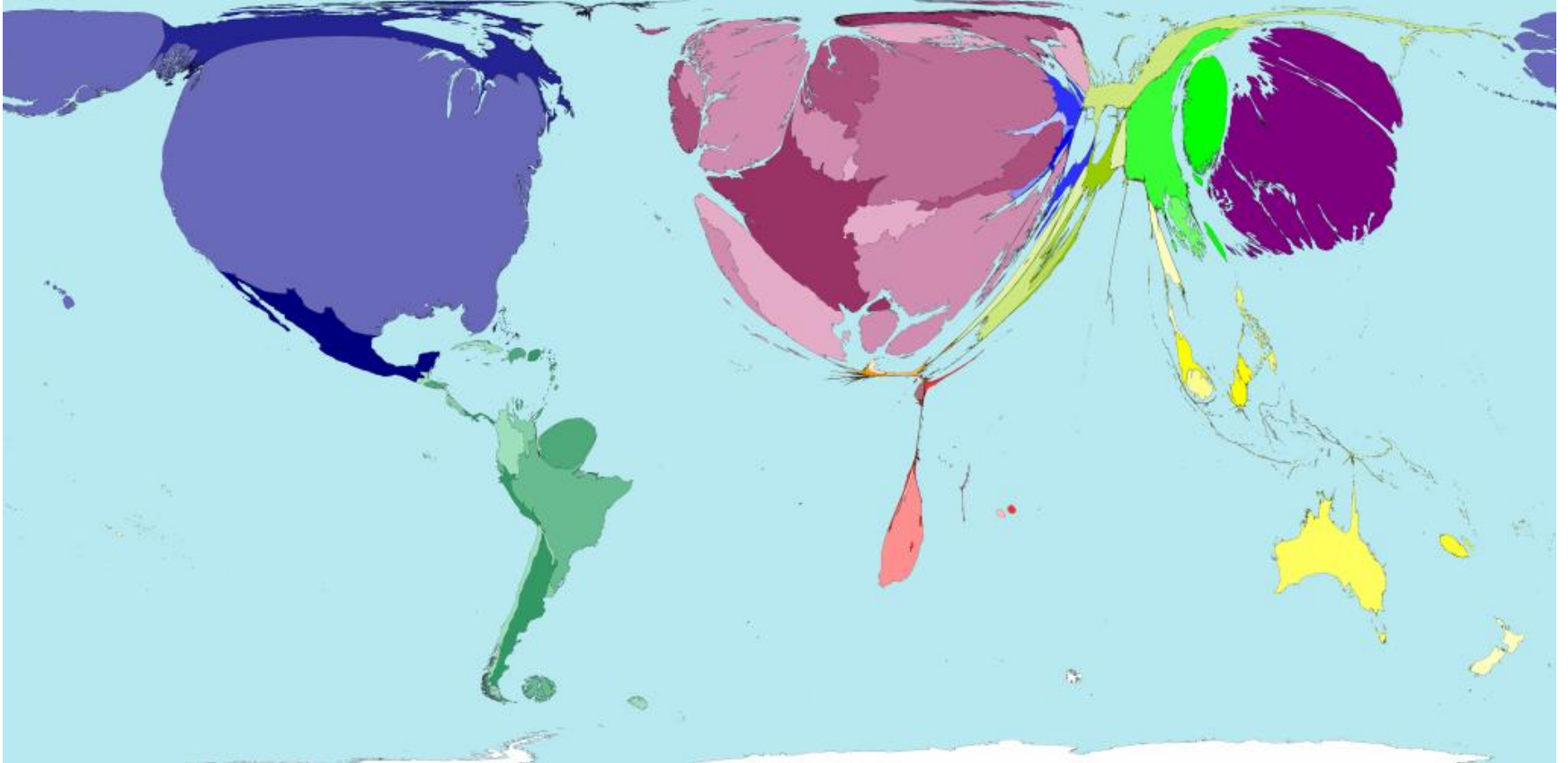
SASI Group (University of Sheffield)

Hepatitis B Deaths



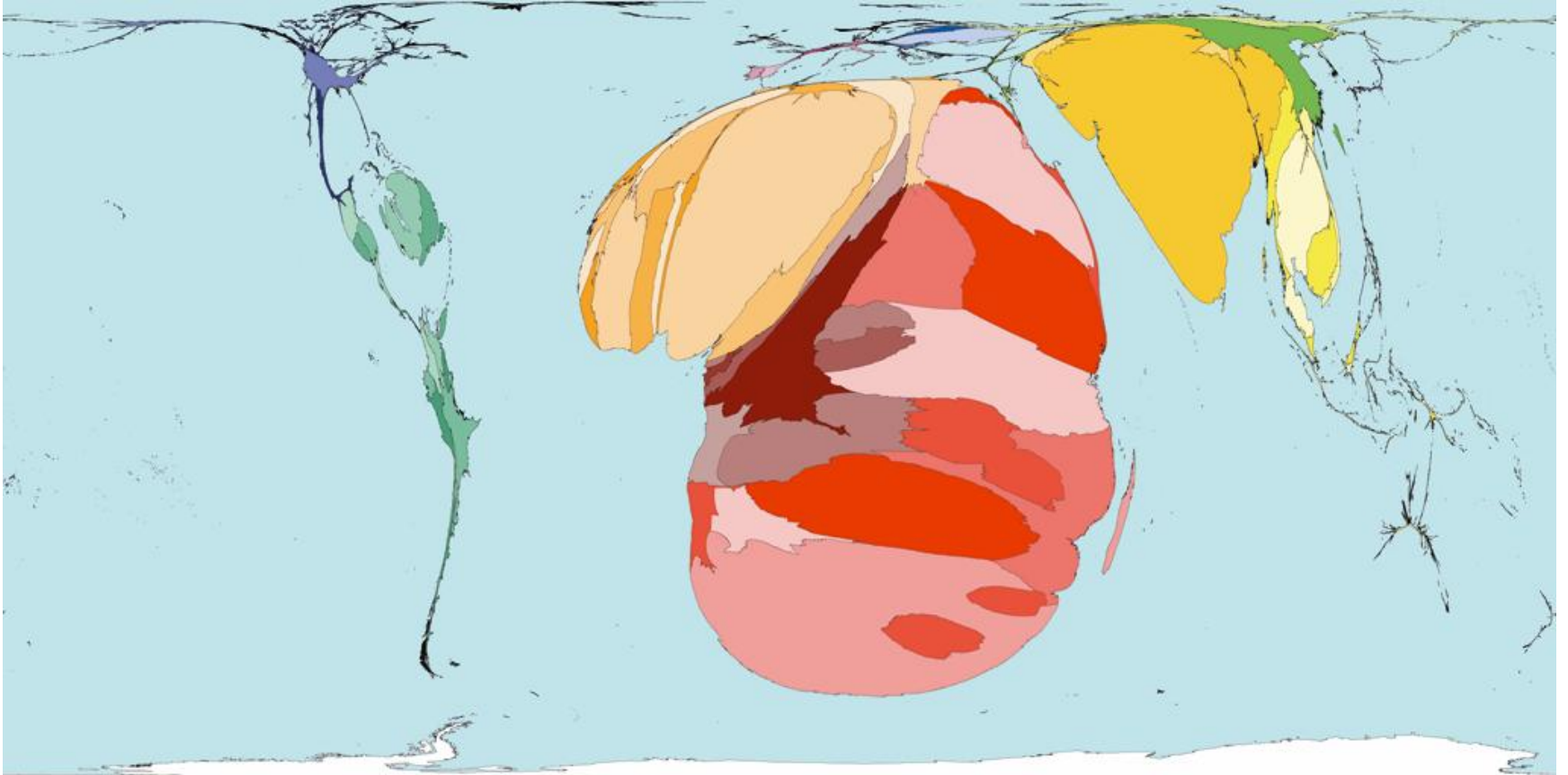
SASI Group (University of Sheffield)

Living on \$100 - \$200/day



)

HIV/AIDS



)

Summary

- Treatment of HBV has dramatically evolved over the last 15 years.
- We now have highly effective and safe NUCs for long term therapy.
- In selected patients-a trial of Peg IFN is warranted.
- Many patients benefit from NUCs, however the greatest barrier to therapy for many will be socioeconomic